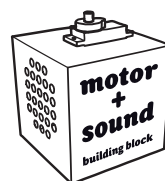


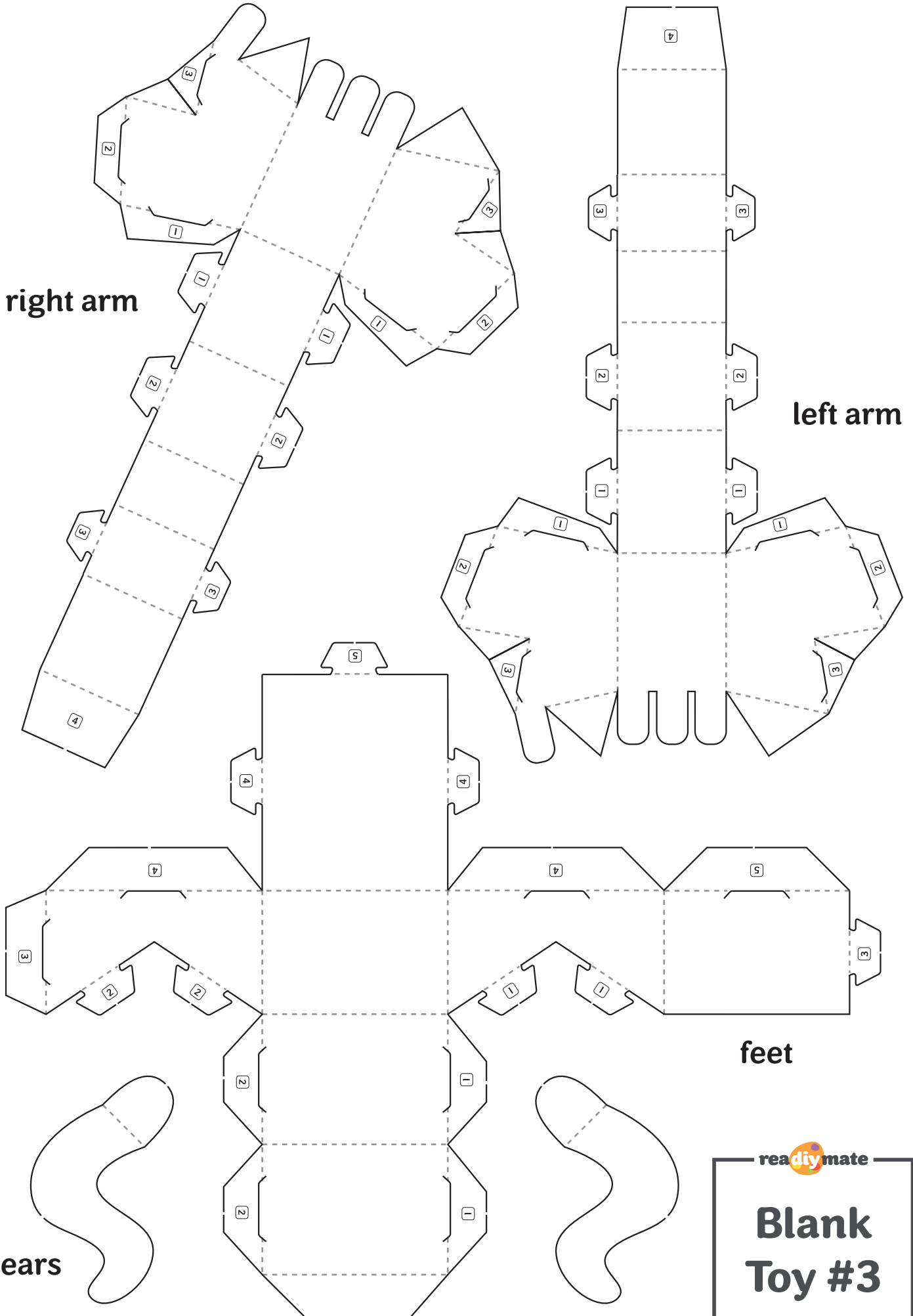
## body

PLACE THE 'MOTOR + SOUND'  
BUILDING BLOCK INSIDE  
BEFORE CLOSING SHAPE



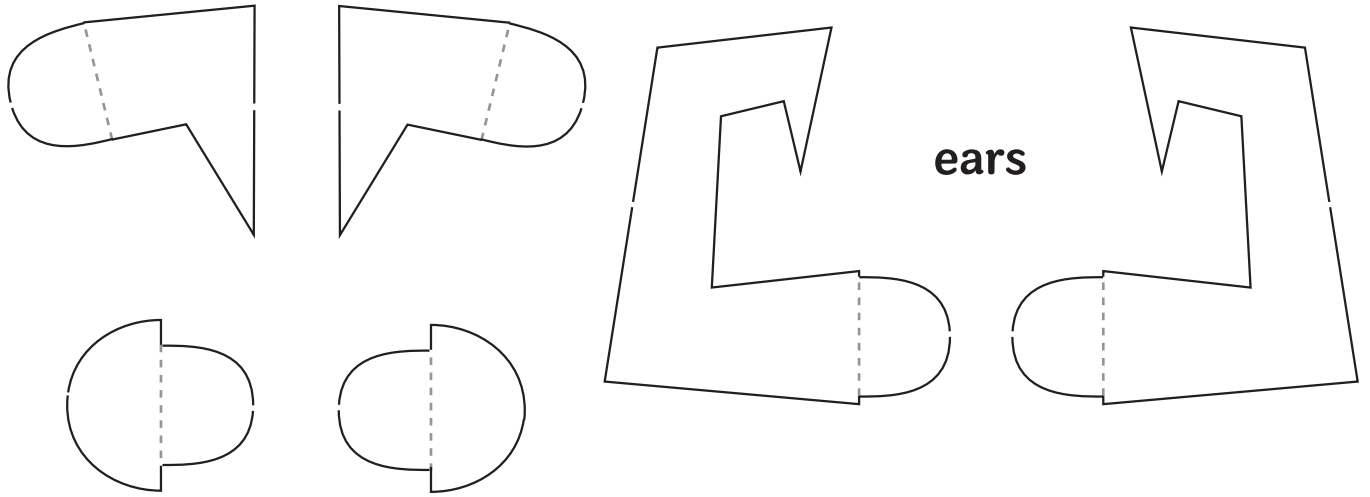
readymate

# Blank Toy #3

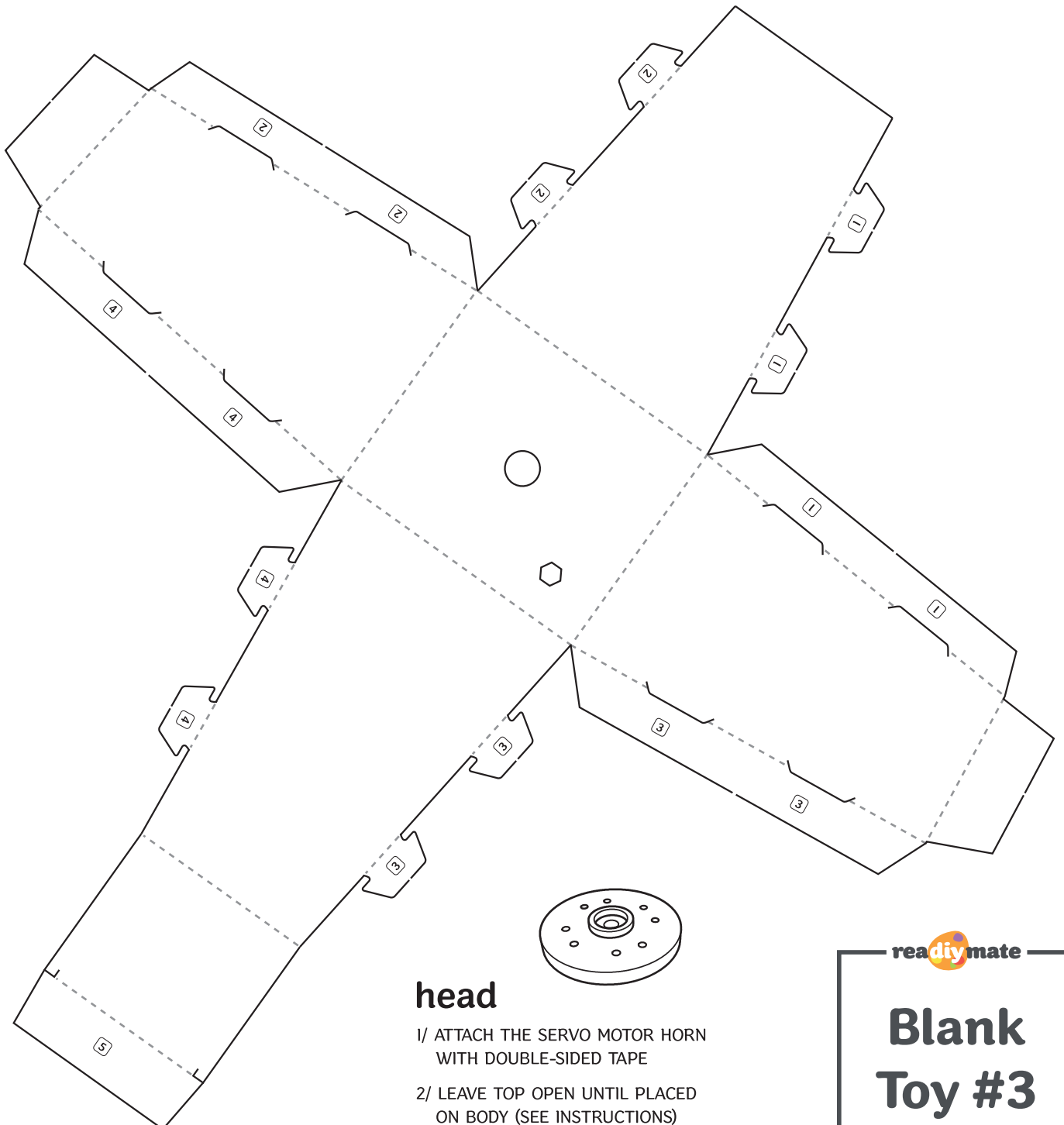


readymate

# Blank Toy #3



ears



### head

- 1/ ATTACH THE SERVO MOTOR HORN WITH DOUBLE-SIDED TAPE
- 2/ LEAVE TOP OPEN UNTIL PLACED ON BODY (SEE INSTRUCTIONS)

readymate

# Blank Toy #3